

# 7<sup>th</sup> BESTUFS Workshop

## „Land use planning and business models for urban distribution centers“

### Approaches of different European cities



**Fraunhofer**

Anwendungszentrum  
Verkehrslogistik und  
Kommunikationstechnik

Dipl.-Kfm. Florian Waibel  
Dipl.-Kfm. Axel Eisele

April 2002



# Nuremberg - a short Overview

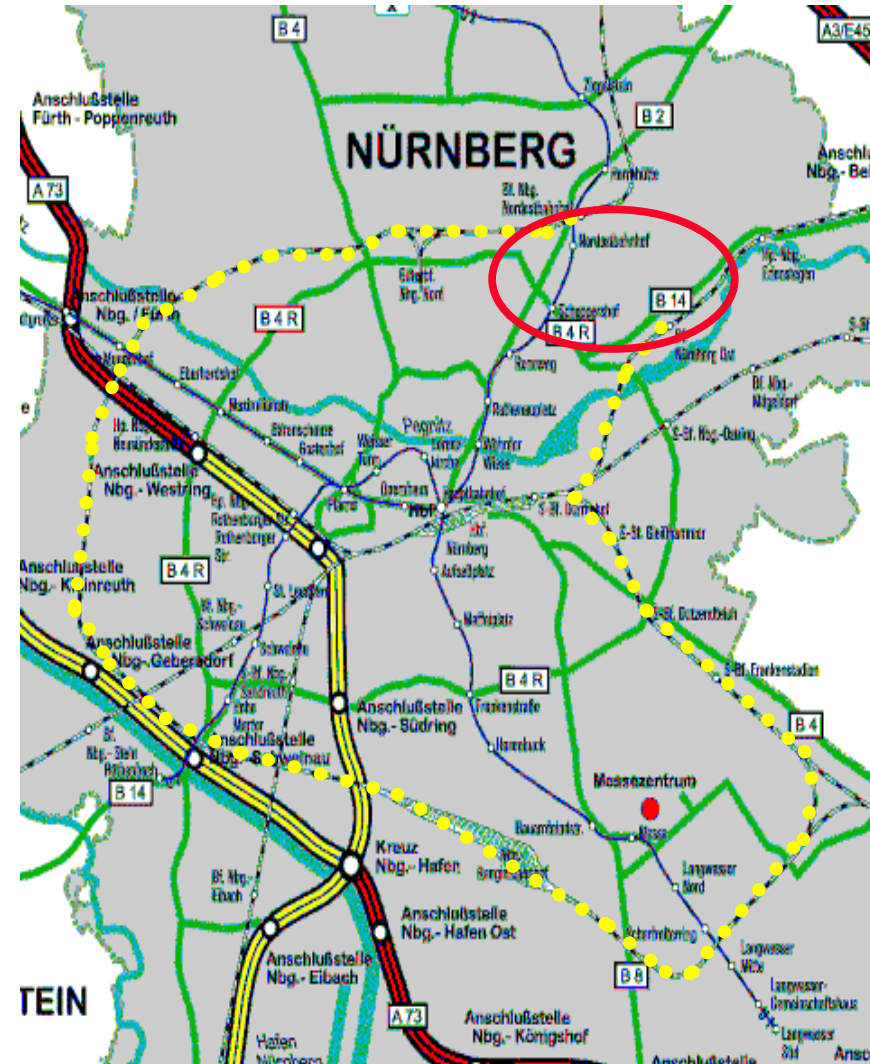
---

- /// Nuremberg is economic and service center of Northern Bavaria
- /// 500.000 inhabitants / 185.800 km<sup>2</sup>
- /// catchment area of 1,8 million inhabitants
- /// economic structure
  - /// industrial enterprises (export quota of 40 %)
  - /// growing service sector with large proportion of future-oriented branches
  - /// high degree of centralization as trading and shopping city
  - /// largest freight village in southern Germany



# Rail Transport in Nuremberg City: Ringbahn

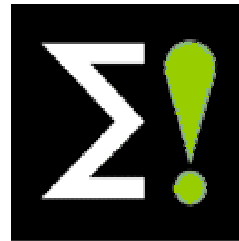
- /// Ringbahn for transport of „old economy“ businesses
- /// high maintainace costs after plant close down (loss of customers)
- /// private re-activation failed (fragile bridges)
- /// New facts: DB tears down routes (north-east loophole)





# Logistical Core Competencies: Freight Village Hafen Nuremberg

- /// Freight Village GVZ Hafen Nürnberg
- /// more than 337 ha
- /// more than 240 logistical businesses
- /// 5.400 employees
- /// 9 Mio. t tri-modal turnover
  - /// street
  - /// rail
  - /// ship
- /// central location in Europe
- /// new international project:  
EUREKA „EW-Land-Bridge“



# DB-Terminal for Combined Traffic

- /// Freight station Nuernberg is No. 5 in German multimodal goods volume turn over
- /// Terminal in residential zone Gostenhof (not in freight village)
- /// reaching for lorries problematic
  - /// play zone in access street
  - /// daily traffic jam to cargo abandon time
  - /// low city bridges (< 3,7m) cause alternative shortcuts
- /// concrete planning for re-location in freight village (after 10 years)

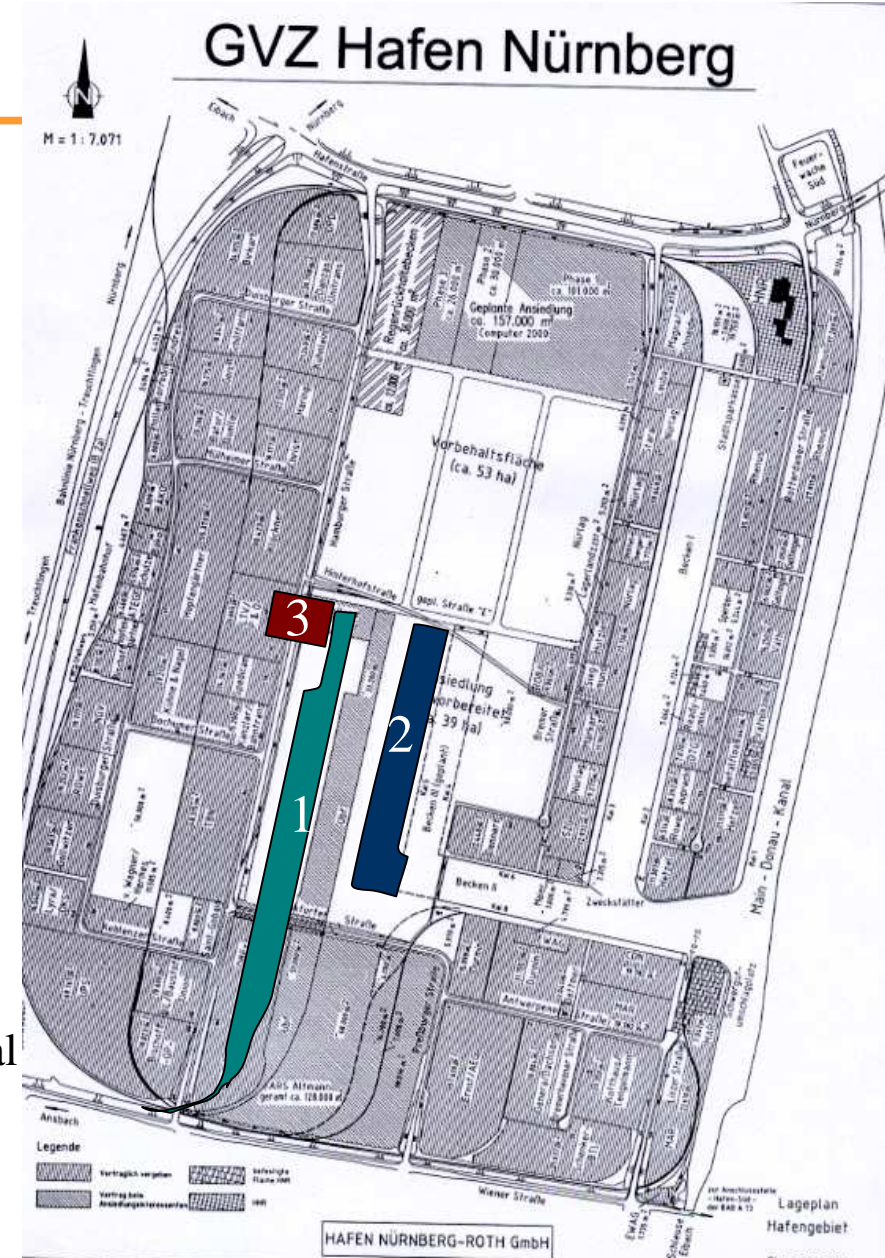


Folie: 6

# Planned development - infrastructure



- 1: trimodal combined handling- and container terminal
- 2: third port basin
- 3: customs

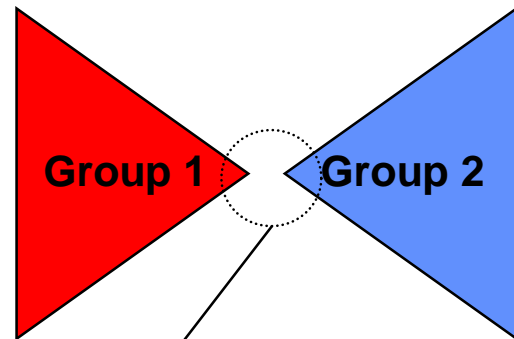


# Integration of long- and short-haul Logistics: Citylogistics ISOLDE in Nuremberg

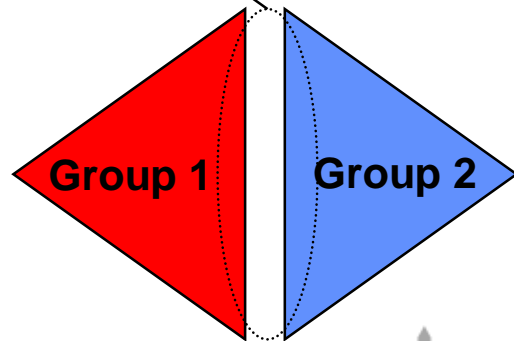
- /// Load units from GVZ ...
- /// ... to inner city retail stores
- /// new forms of logistical cooperations
- /// electric driven vehicles
- /// value-added-services:
  - /// parcel and palett pick-up / delivery
  - /// storage service
  - /// reverse logistics
  - /// home shopping
  - /// city marketing



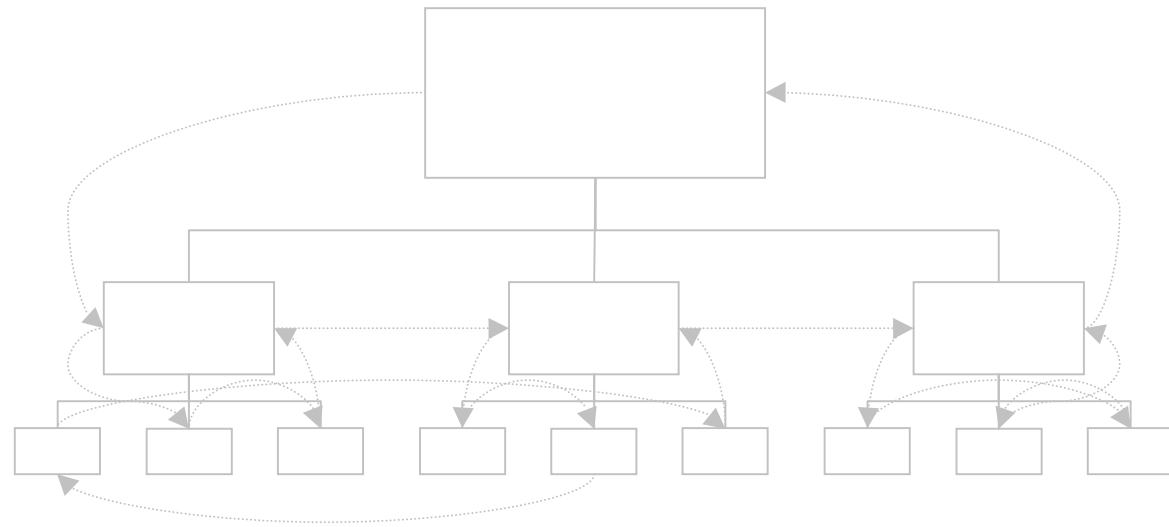
# Organizational Processes: New Forms of Interaction



density of interaction



old: „bow tie“ - organization



new: „symbiotic“ - organization

- many levels
- long run
- high intensity
- process orientated

# Business Management of the „Cooperation Agency“ at GVZ Hafen Nuremberg

