

ELCIDIS

Electric deliveries in the city centre

THE URBAN COMMUNITY OF LA ROCHELLE

18 cities

140 000 inhabitants

80 000 inhabitants in La Rochelle

1 President, mayor of La Rochelle

206 km².

European program



To assess the efficiency and
environmental

impact of electric vehicles

in urban goods distribution systems



Stavanger T

Stockholm T

Rotterdam T

Erlangen T

La Rochelle T

Milan T

Preliminary study

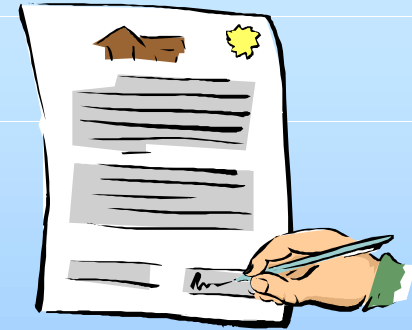


To study the conditions for implementing and running the project.

- An exhaustive analysis of the current situation
- Direct surveys of carriers, shopkeepers ...
- A platform model operational in technical, legal and financial terms.

Results of the study

349 firms were polled.



96 are liable to take part in the demonstration

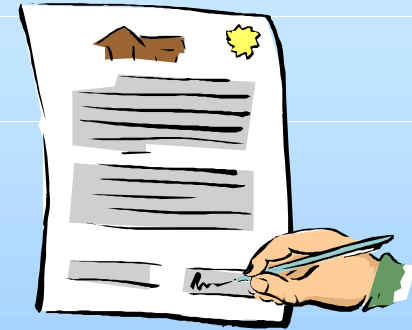
39 % from tertiary

33 % from retail trade

19 % from craft.

Results of the study

Parcels delivered : 603 per day.



Number of parcels per firm : 6 per day.

Average weight : 12 kilos.

Size : less than 1 meter.

83 % are not foodstuffs.

Objectives



Make better use of delivery space
(location, surface area, control).



Encourage people to abide by regulations
(parking zones, hours, size of vehicles).

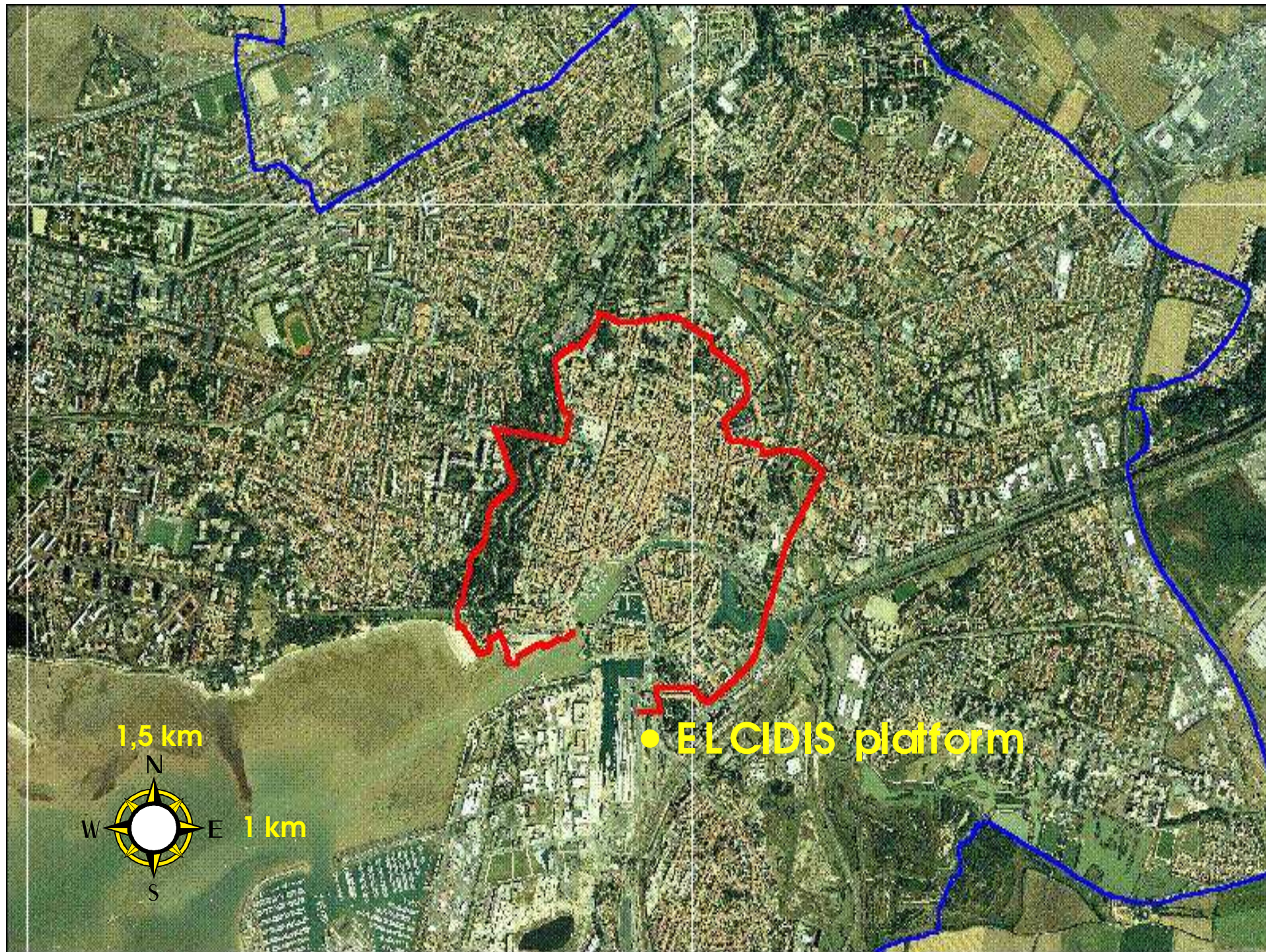


Promote organizational systems that
generate



less congestion and pollution.

Demonstrate the efficiency of a new
system



The management



Open invitation to tender : March 2000.

Manager : Transports Genty.

Experiment : 23 months from February 2001

Support of the Community

Premises : 700 m².

Electric vehicles : 6 Berlingos , 1 Saxo.

Handling equipment :

- an electric lift truck

- an electric pallet jack

- a hand-operated pallet jack.

Computer hardware.



Cost per parcel : 3.75 (ex. tax).

Financial backing : 2.08 (ex. tax).

Results

Objective : 600 parcels / day



February 2001 : 124

September : 218

March : 160

October : 298

April : 187

November : 215

May : 342

December : 217

June : 356

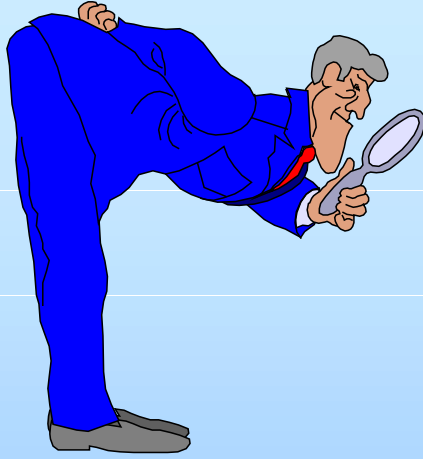
January 2002 : 200

July : 306

February : 197

August : 226

March : 271



Evaluation plan

Economical, technical and legal evaluation.

Highlighting of factors in the success of EICidis.

Identification of problems and shortcomings.

Environmental evaluation.

Technical assistance in developing related services.

ELCIDIS

ELECTRIC DELIVERIES IN THE CITY CENTRE

JACQUES MOLLARD

COMMUNAUTÉ D'AGGLOMÉRATION DE LA ROCHELLE

