

Freight Operator Recognition Scheme



Glen Davies
Freight Development Manager
Transport for London – Freight Unit



Contents



- Context
- Scheme Characteristics
- FORS Partnership
- Commercial Vehicle Education Unit
- FORS Specification (the standards)
- FORS Benefits (the incentives)
- Looking forward - Development milestones



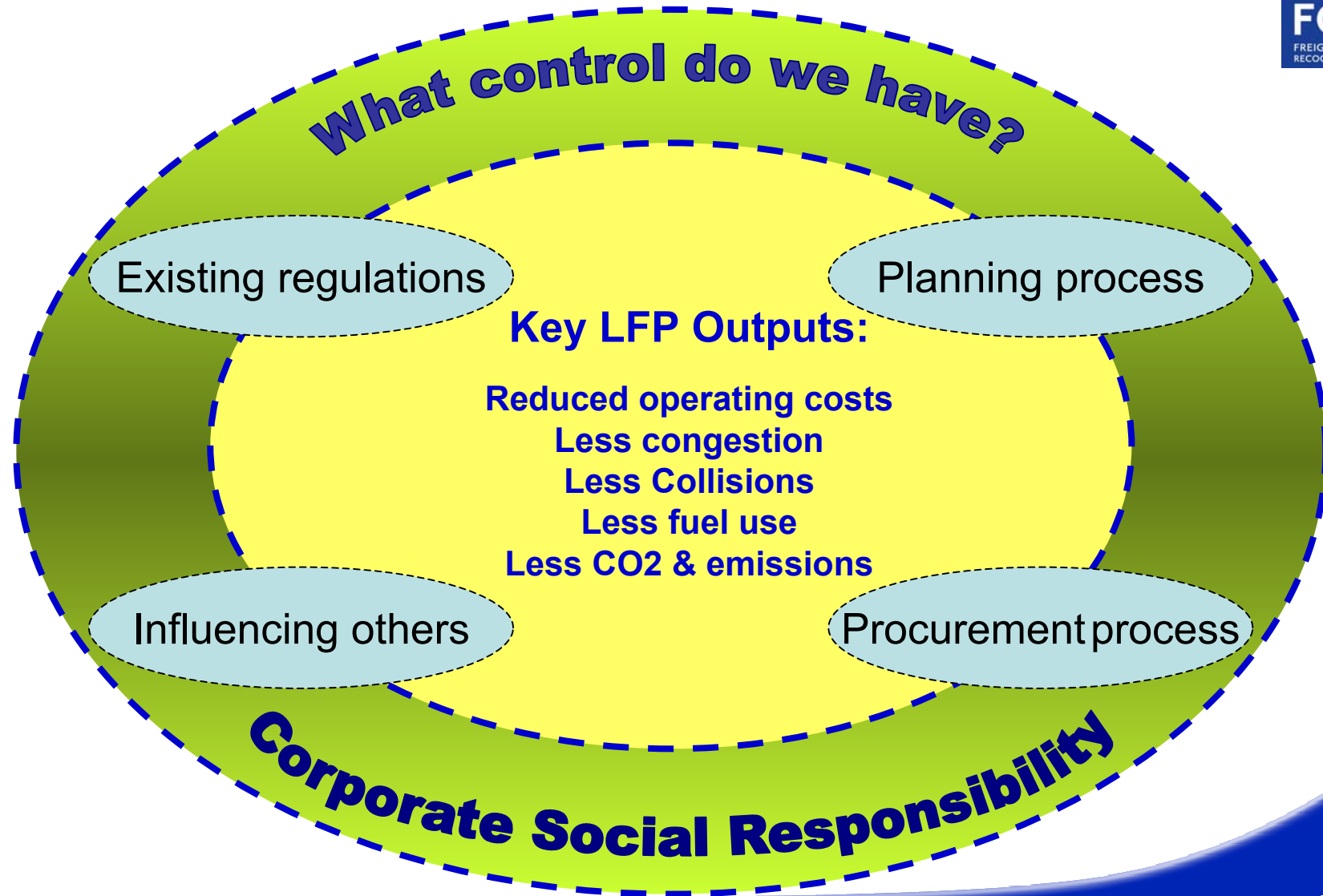
The Vision for Freight in London



‘The safe, reliable and efficient movement of freight and servicing trips to, from, within and, where appropriate, through London to support London’s economy, in balance with the needs of other transport users, the environment and Londoners’ quality of life’.



Freight - Controls and Influence



The London Freight Plan



- 3 years in production
- 87% positive consultation response
- Need for balance
- 4 key freight projects
- 3 supporting workstreams
- Create a 'win-win-win' scenario

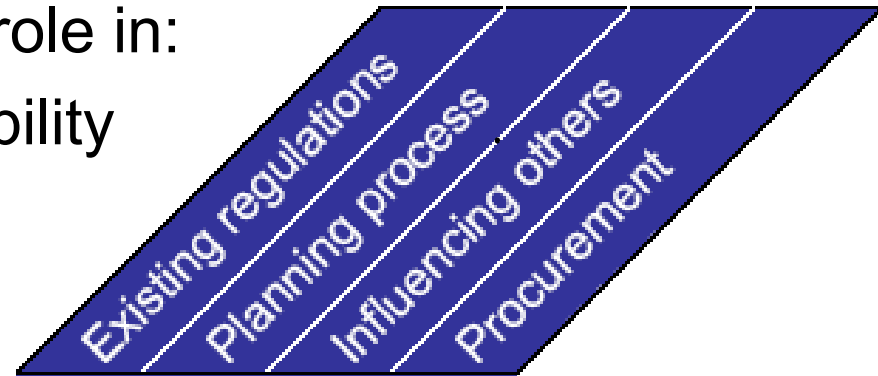


London Freight Plan Projects



Focus on GLA Group clients' role in:

- Corporate Social Responsibility
- Operational Management
- Procurement



Freight Operator Recognition Scheme	✓	✓	✓	✓
Delivery & Servicing Plans	✓	✓	✓	✓
Construction Logistics Plans	✓	✓	✓	✓
Freight Information Portal	✓	✓	✓	
Partnership Development	✓	✓	✓	✓
Major Projects	✓		✓	
Data, Modelling and Best Practice	✓	✓	✓	



FORS Characteristics



Recognising Excellence



Raising Standards

- Addresses operators' key concerns
- Aligns existing regulations into an industry compliance standard
- Recognises level of operational performance
- Benchmarking used in procurement to incentivise good practice
- Delivered by an alliance of industry partners – working together
- Incentivises the adoption of good practice – the benefits
- Aims to deliver real bottom line benefits to operators of all sizes
- Is voluntary, free to join and industry recognised



Industry Concerns



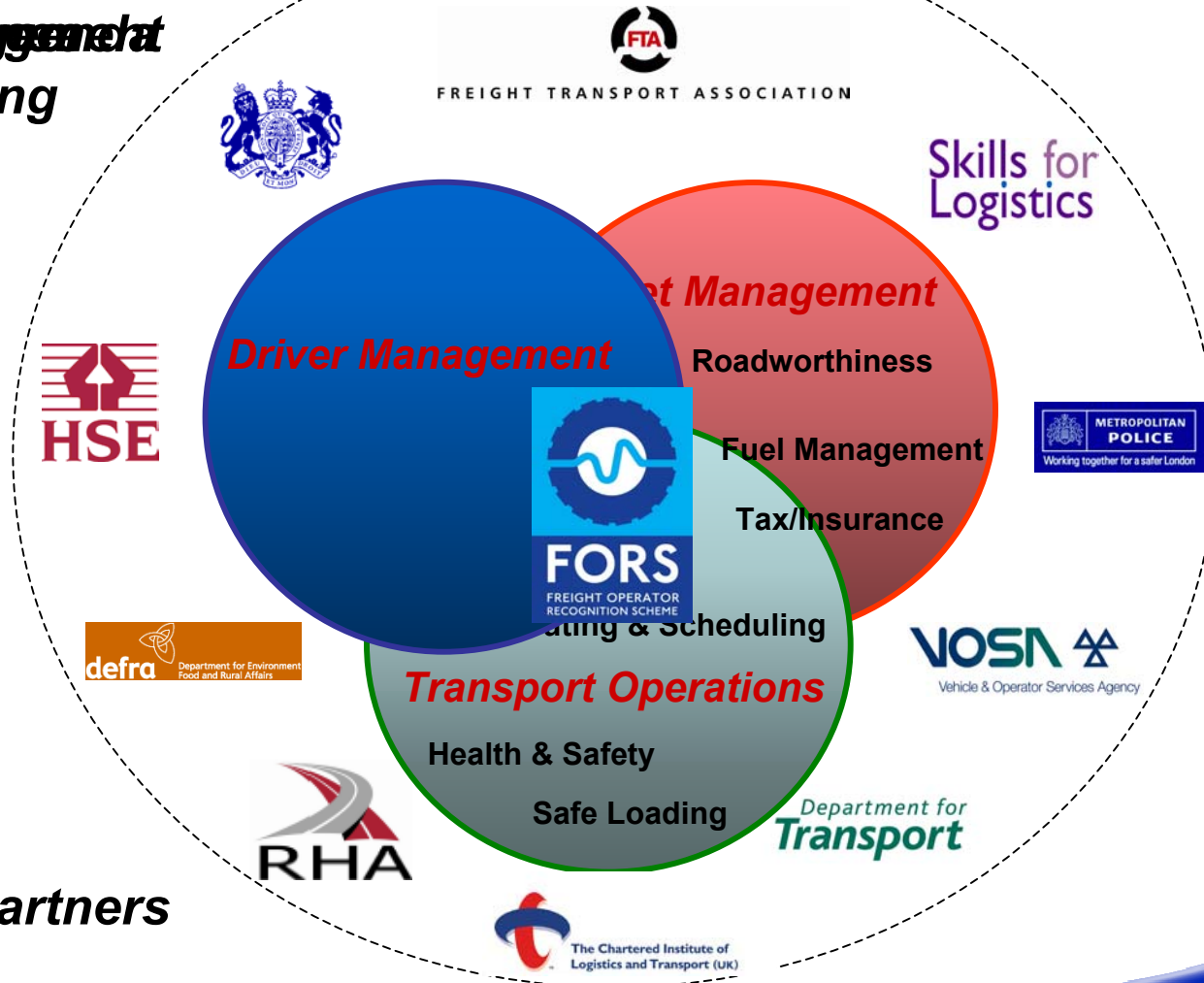
- Costs
 - PCNs
 - Fuel
 - Collisions and insurance
 - Driver training - CPC
 - Harmonisation of regulations
 - Administrative burdens
- Need for 'Green' credentials
- Recognition for the importance of freight



FORS Risk Management Standards



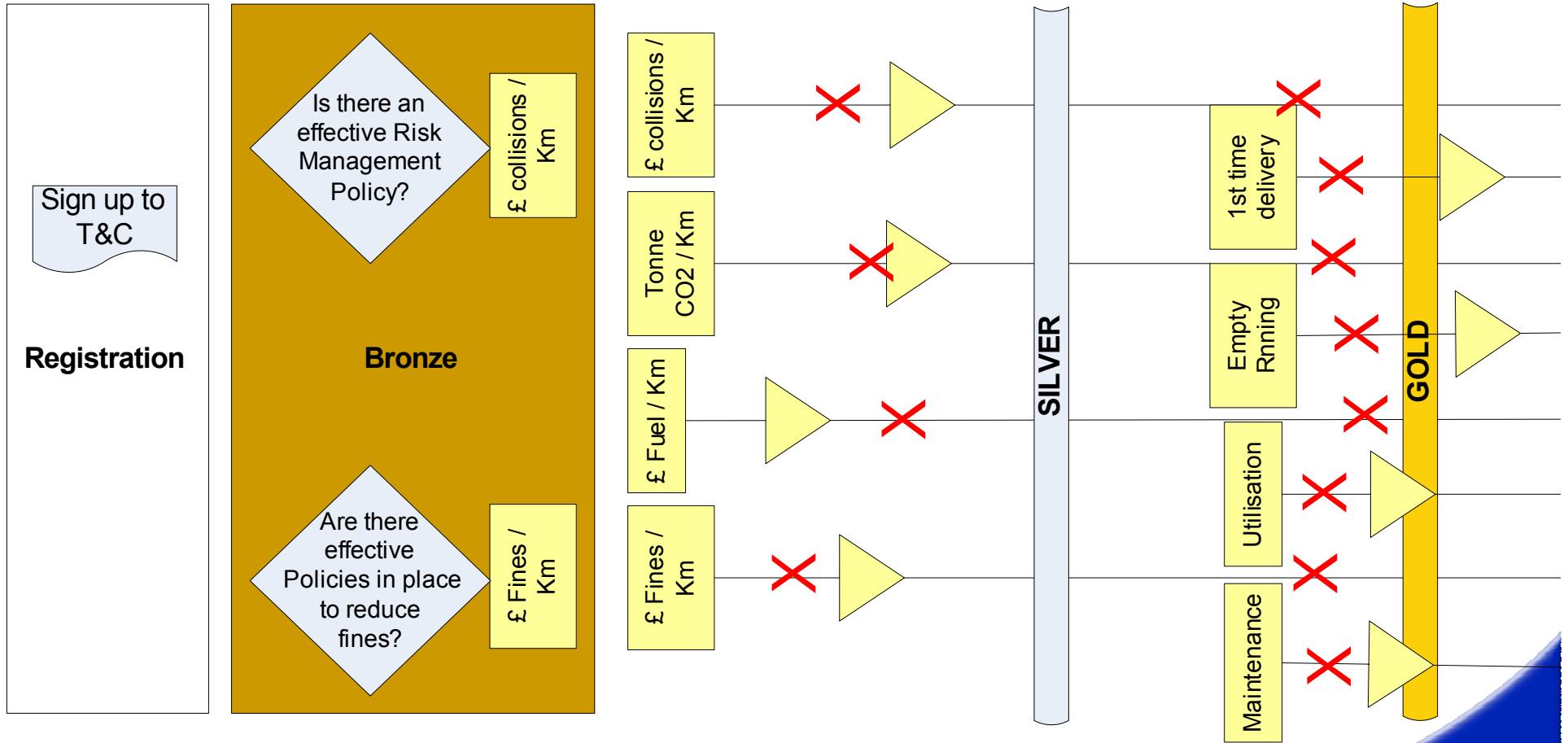
~~Risk Management~~
Risk Management
Monitoring



Industry Partners



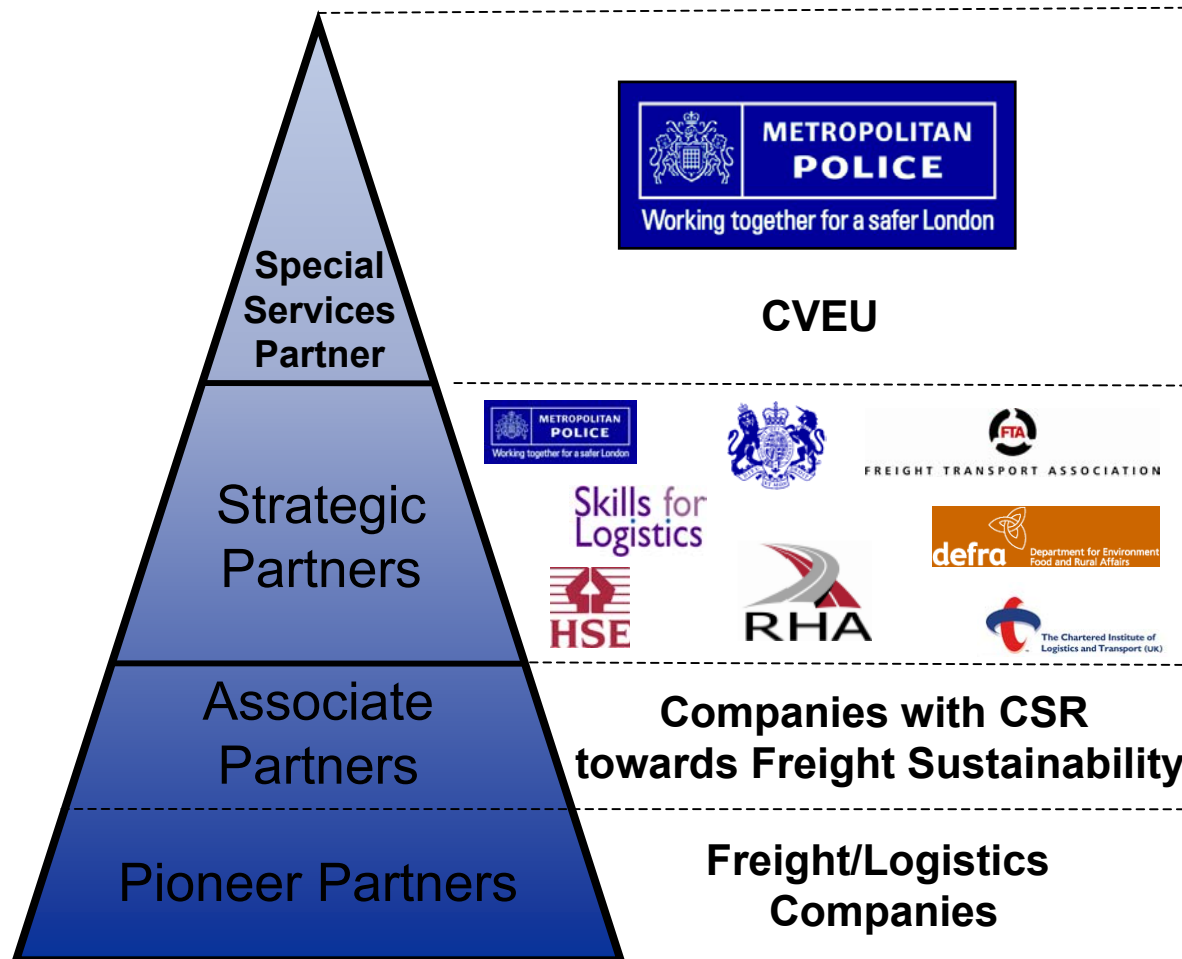
Recognition and Benchmarking



FORS Working in Partnership



Types of Partnership



Department for Transport

VOSA
Vehicle & Operator Services Agency



Commercial Vehicle Education Unit



- A Strategic Partnership funded by TfL
 - Highly qualified Traffic police officers
- Enforcement and education – through company visits
 - Delegated HSE powers to address WRRS
- Located around London in MPS Traffic Garages



FORS Benefit Package



London Freight Booster



Licence Check Service



Workshops (WRRS)



Driver Profiling



Fuel Advice Programme



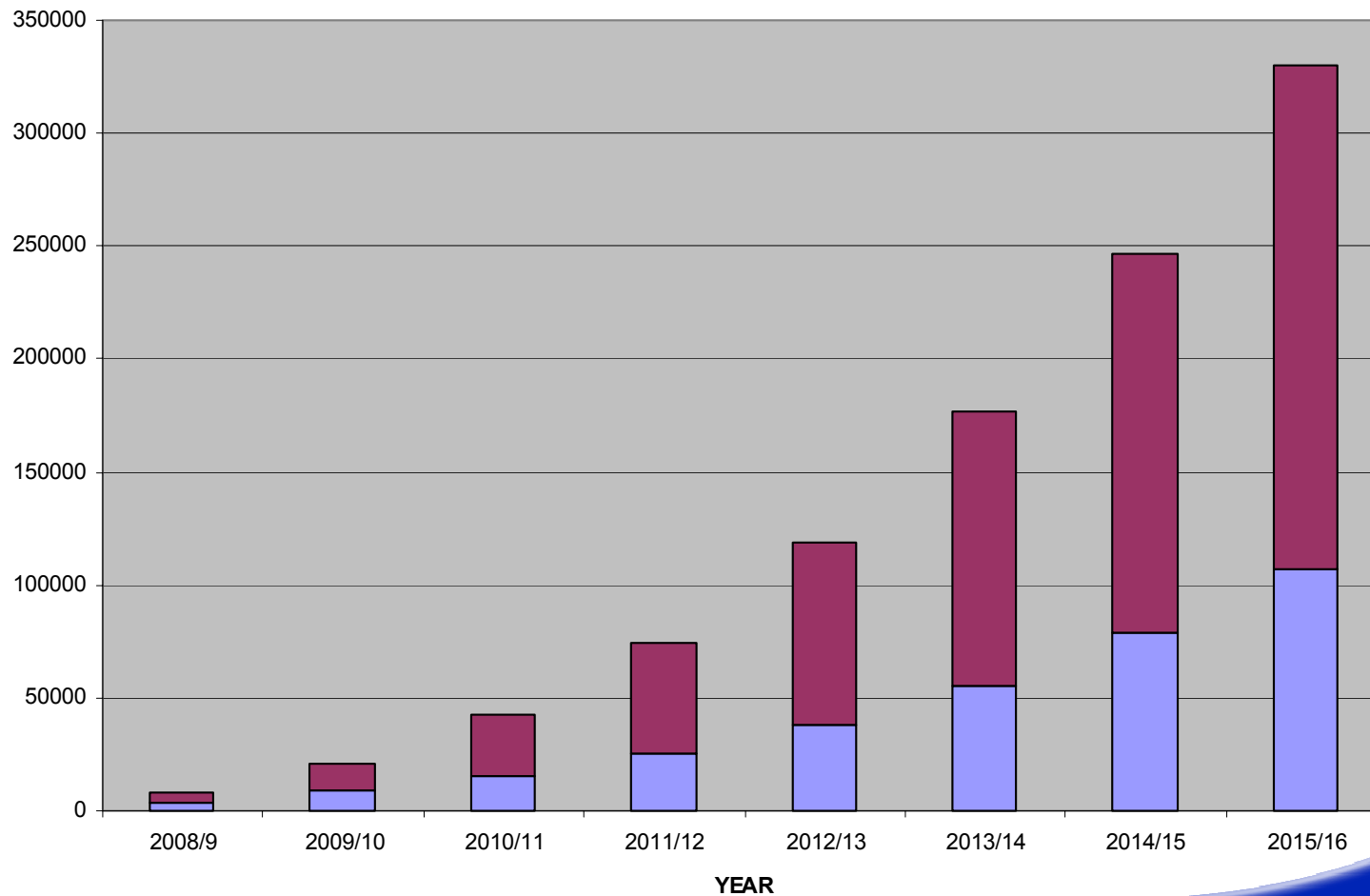
PCN Advice Programme



The Business Case - CO₂ Savings



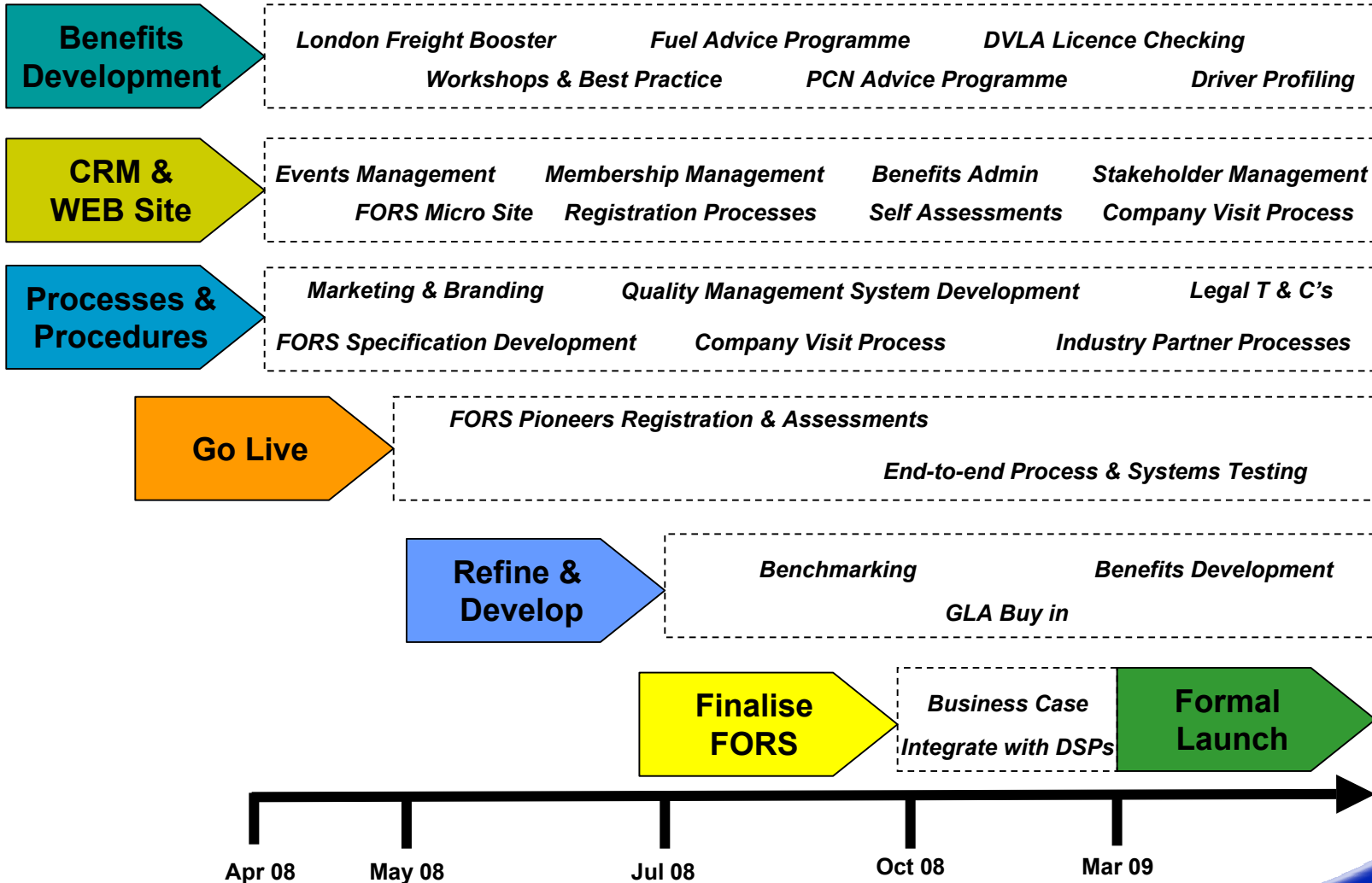
FORS AND GENERAL TREND CO2 SAVINGS FROM BASE YEAR



■ GENERAL TREND FROM BASE YEAR ■ FORS SAVINGS FROM BASE YEAR



Looking Forward



Questions



Glen Davies

Freight Development Manager

Transport for London

Freight Unit

Tel: 0207 027 3029

Mob: 07738 140844

Email: glendavies@tfl.gov.uk

